

Dangbei

| Google TV

Dangbei Atom

# First Google TV™ Laser Projector Designed by Dangbei

Thinner. Brighter. Smarter.



\* Google TV is the name of this device's software experience and a trademark of Google LLC.



**1200** ISO Lumens  
1080P FHD



Auto Focus



Keystone  
Correction



Screen Fit



Obstacle  
Avoidance

Thickness: 1.87 inches

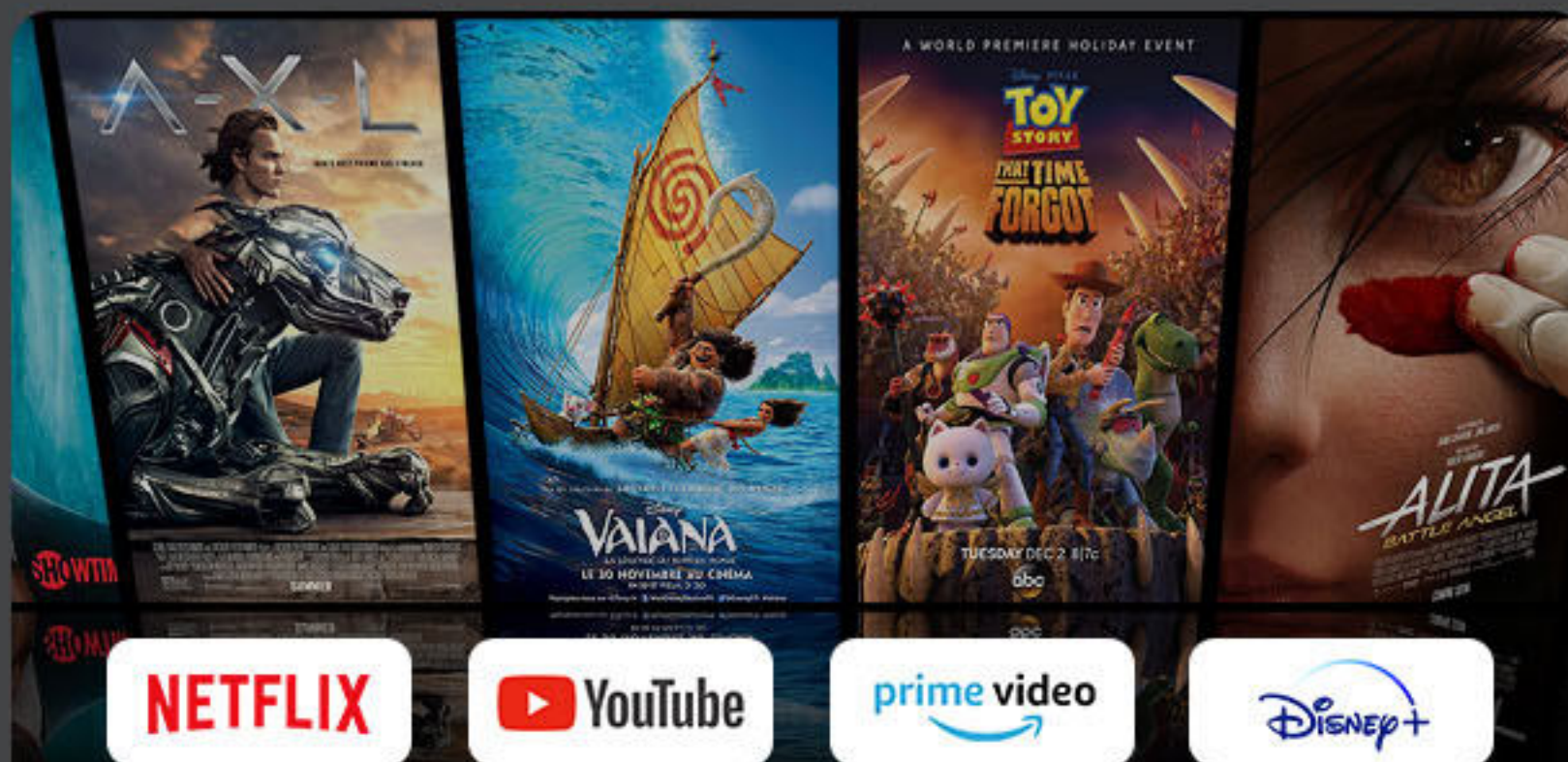
Weight:

2.82lb



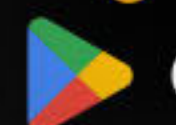
**ALPD<sup>®</sup>**

Laser Technology



Google TV

 Hey Google

 Google Play

 Chromecast built-in

**30,000**  
Hours Lifespan

**HDR10**  
HLG

**3D**

**2GB+32GB**

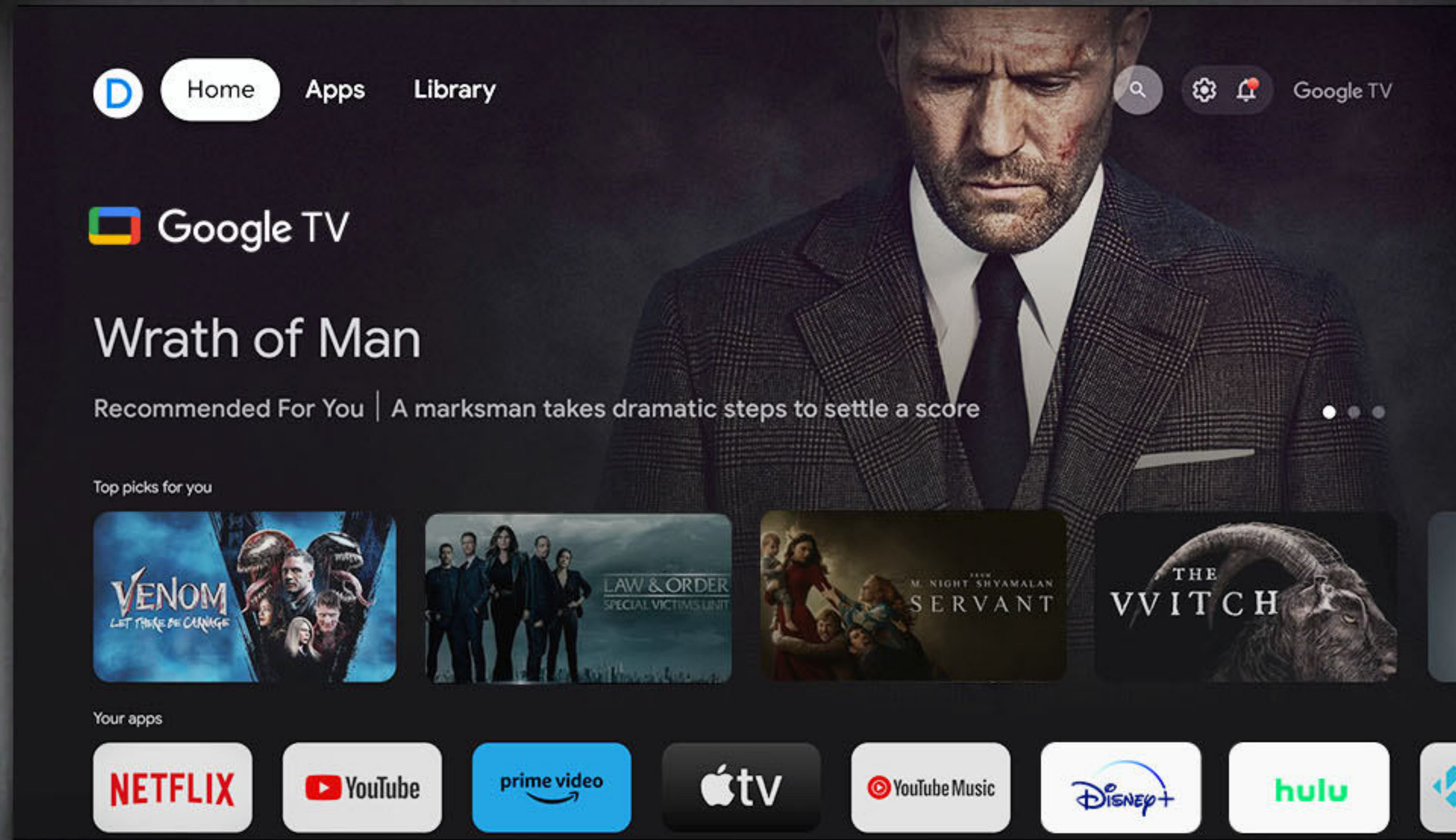
**Dolby Audio**  
2x5W Speakers



# All Your Favorite Content in One Place

Atom's Google TV integration lets you browse 700,000+\* movies and shows from top streaming services like Netflix, YouTube, Prime Video, Hulu, Disney+, and more - all in one place.

\*US only, otherwise 400,000+.





# Let Google TV Curate Your Entertainment

Atom caters to the preferences of your entire family by offering individual profiles through the integrated Google TV. This means each family member can get their personalized recommendations, manage and update their personal watchlist and library across all their devices.



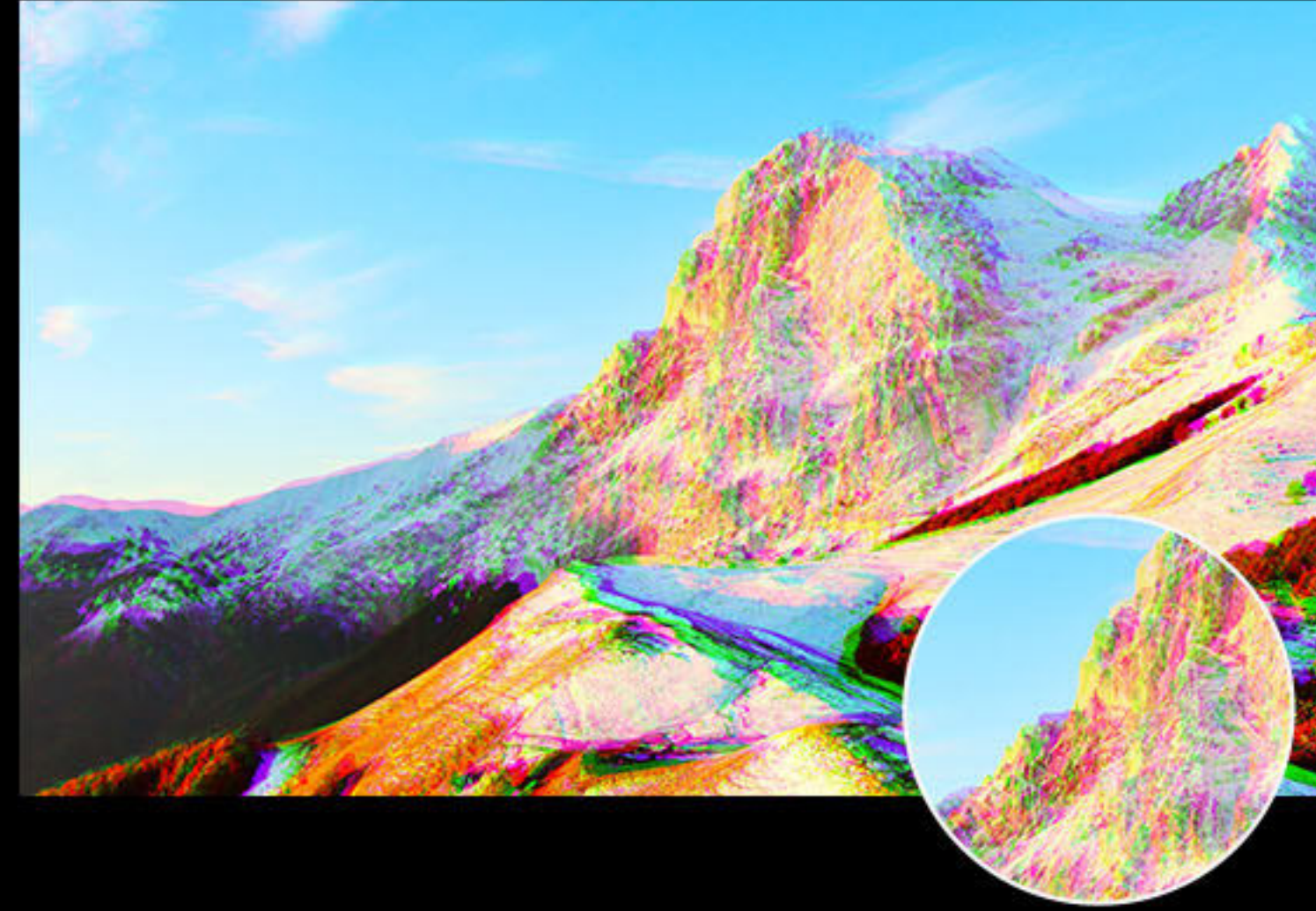


# ALPD® Laser: So Bright. So Comfortable.

Step into the future of home theater with ALPD® (Advanced Laser Phosphor Display). This cutting-edge laser projection technology has been adopted by over 30,000 theaters worldwide, offering high brightness with no speckles or color fringing. Binge-watch your favorite Netflix series without eye strain!



**Dangbei Atom**  
No speckles / No color fringing



**Other Projector**  
Visible speckles / Evident color fringing



# Perhaps the Brightest Projector of its Shape

Experience the incredible power of compact design with the ultra-thin Atom, delivering a 1200 ISO lumens of brilliance in a surprisingly sleek and small package!

 **1200** ISO  
Lumens





# As Bright As Ever. Now Even Thinner

This sleek, lightweight projector can be placed in any room of the house or held in one hand for an easy move. As the thinnest model yet to achieve such vivid luminosity, Atom opens new doors for immersive viewing in any space.



\*This model does not have a built-in battery and must be connected to a power source.



# True High Definition with 1080p

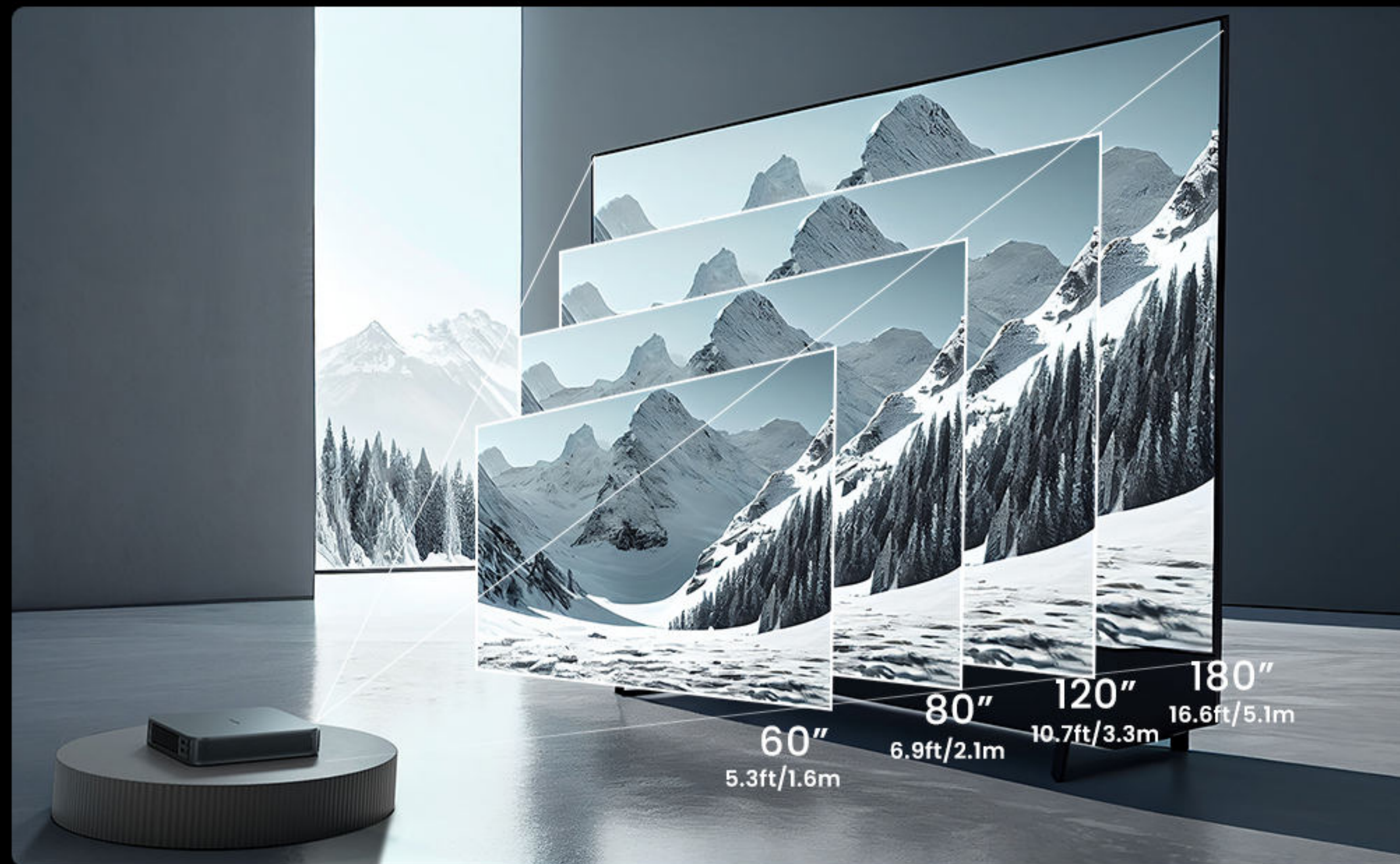
With a sharp, detailed 1080p resolution, Atom delivers pixel-perfect visuals that are far superior to standard 720p, letting you see every image in crystal clear high definition.





# Cinema Scale at Home

Immerse yourself in larger-than-life entertainment with Atom, capable of projecting stunning visuals on screens up to a whopping 180 inches.





# Bring Depth and Detail to Life

Atom brings images to life with support for HDR10 and HLG for heightened contrast. Dark shadows appear more nuanced, while bright highlights shine with excellent detail.





# Where Filmmaker Vision Meets Precision

With 3 color temperature settings, including the industry-standard D65, Atom precisely restores the authentic colors filmmakers intended. This is made possible through its state-of-the-art, microsecond-level dynamic adjustments for consistent accuracy.



Warm



Standard



Eye Care



# dToF Laser Radar: Perfect Pictures in Seconds

Atom integrates multi-point dTOF(direct time-of-flight) sensors, CMOS, gyroscope, and opto-sensor modules. Combined with Dangbei's intelligent AI algorithms, Atom's upgraded intelligent image adjustment system is faster and more accurate, greatly reducing the need for manual adjustments.



Auto Focus



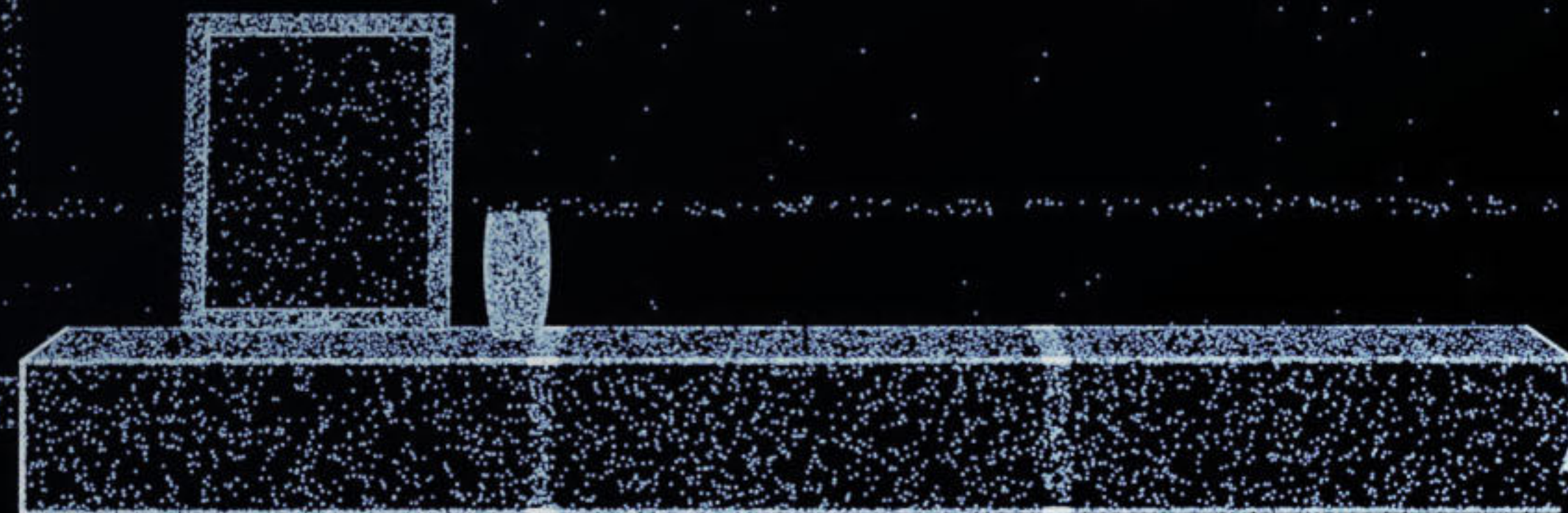
Keystone  
Correction



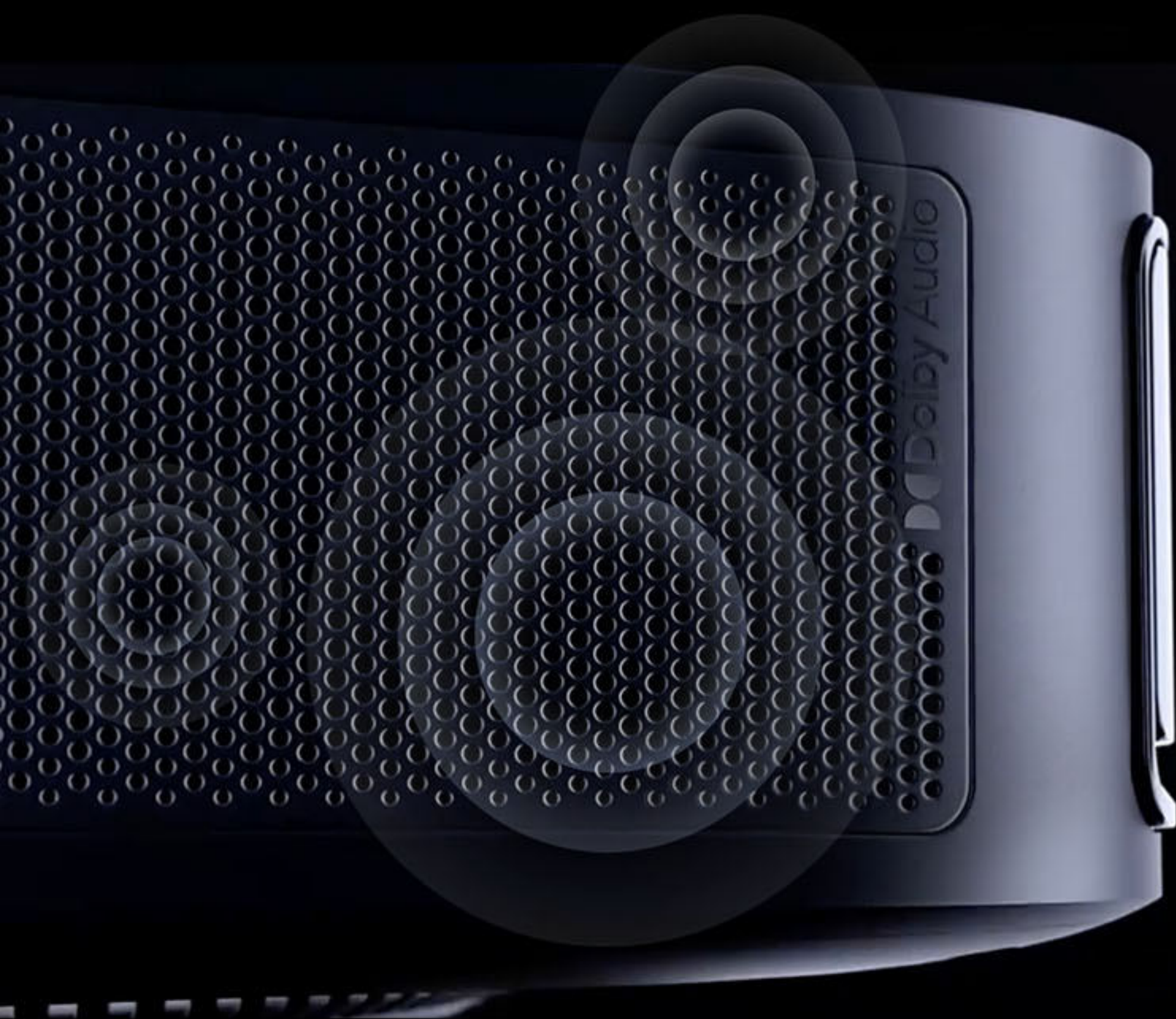
Screen Fit



Obstacle  
Avoidance







# Your Projector Your Bluetooth Speaker

Enjoy room-filling sound with the projector's built-in dual 5W speakers, Dolby Audio™ support, and wireless Bluetooth audio connectivity - use it as a speaker with 5 audio modes tailored for music, movies, gaming, and more.



Standard



Movie



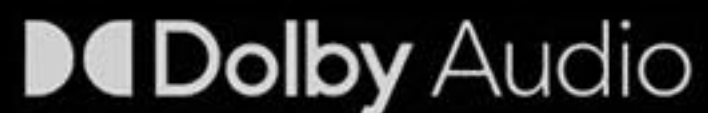
Music



Sports



Custom





# The Remote That Does it All

Atom's intuitive remote makes operation a breeze with exclusive side keys for quick auto focus and volume control, a dedicated Google Assistant button for voice control, and one-press access to YouTube, Netflix, and Prime Video.





# Make Every Screen a Big Screen

With Chromecast built-in and Airscreen mirroring functions, Atom makes wireless streaming and screen sharing a breeze - connect and display content instantly from compatible smartphones, tablets and laptops for seamless big-screen enjoyment.

 Chromecast built-in





# Into a New Dimension

Immerse yourself in 3D entertainment with Atom's support for 3D content including left-right, top-and-bottom and Blu-ray 3D - experience movies, games and photos leap off the screen as you enter a new dimension of home viewing.



\*Please restore default image and ensure the source is 3D. Blu-ray 3D is available only when connected via HDMI.



# Versatile Connectivity Hub

With an array of ports including USB 2.0, HDMI, and a 3.5mm audio jack, Atom offers flexible connectivity so you can easily display from laptops, gaming consoles, streaming devices, and more.



Smartphone



Tablet



Laptop



Headphones



TV Stick



Game Console



Speaker



USB Drive





# 2 Decades of Non-Stop Entertainment

With an impressive 30,000 hour lifespan, Atom's virtually maintenance-free laser light source and light recycling technology provide decades of worry-free viewing while using energy more efficiently.

Watching 4 hours a day for 20 years  
15% power consumption of a TV

30000

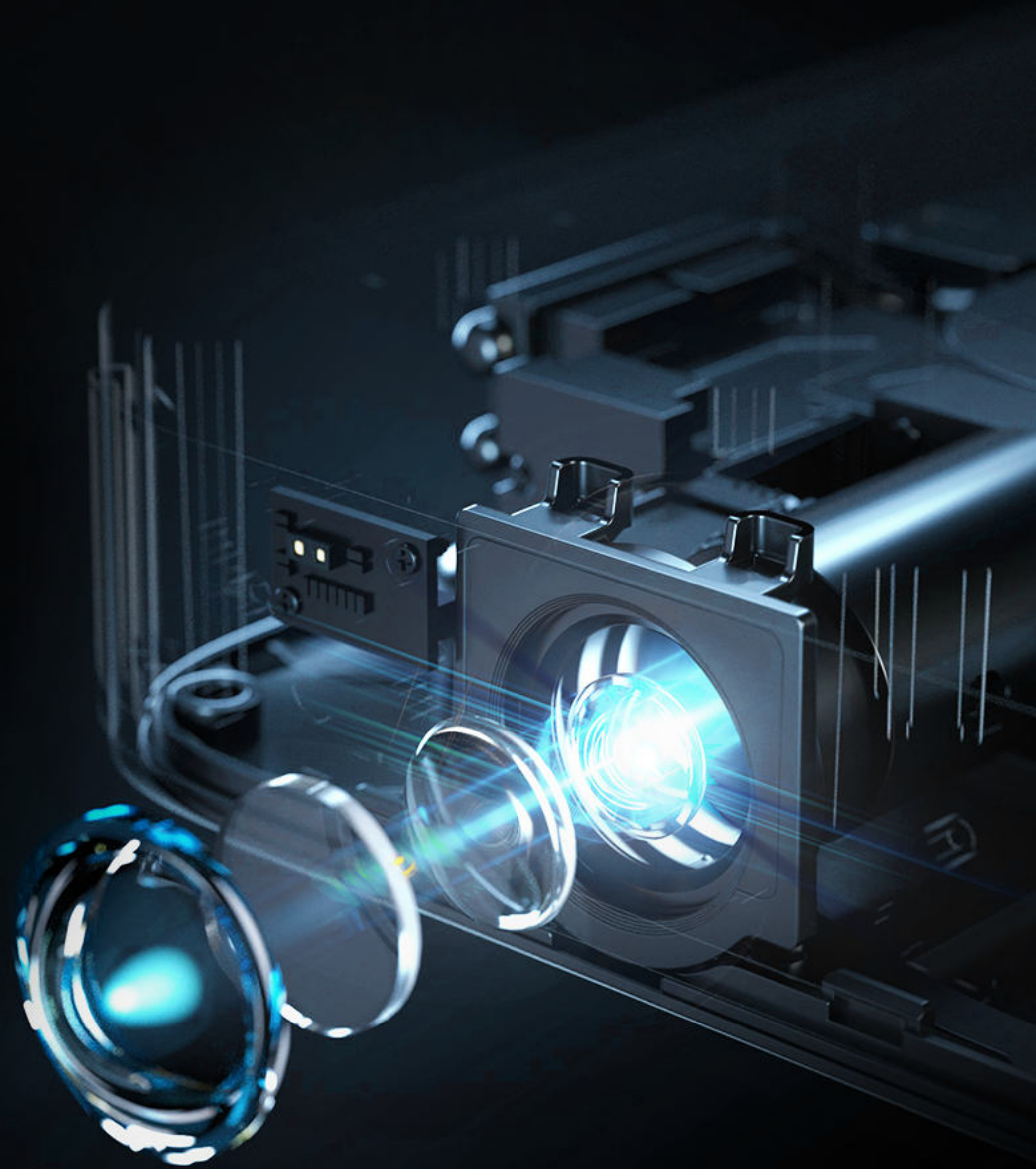


\*Based on the average power consumption of the Atom (80W) and the power of a 98-inch TV (550W), viewed 8 hours every day in one year.



# Perfect Fusion of Form & Function

The addition of a cinema-grade quartz fly-eye lens enhances image clarity, while aero-space-grade aluminum alloy material on the sides ensures both lightweight portability and durability, making Atom the ideal choice for those who demand both style and substance.





# Specifications

## Display

- Display Technology: DLP
- Brightness (ISO Lumens): 1200
- Display Chip: 0.33" DMD
- Light Source: Laser  
(ALPD® Laser Technology)
- Light Source Lifespan: 30,000 Hours
- Resolution: 1080P FHD (1920×1080)
- Supported Formats: HDR 10, HLG
- 3D: Yes
- Eyes Protection: Yes

## Environment

- Operating Temperature: 5°C~35°C
- Power Consumption: 80W
- Noise: Standard Mode <24dB @25°C
- Distance: 1m

## Projection

- Throw Ratio: 1.2:1
- Image Size: 40"~180"  
(Recommended 60"~100")
- Auto Focus: Yes, dToF+Camera Auto Focus
- Auto Keystone Adjustment: Yes, ±30°
- Intelligent Screen Fit: Yes
- Intelligent Obstacle Avoidance: Yes
- Projection Method: Auto, Front, Rear, Front Ceiling, Rear Ceiling, Wall Mount
- Projection Offset: 100%
- Zoom : 100% - 50%

## System

- RAM: 2GB DDR3
- Storage: 32GB eMMC5.1
- Operating System: Google TV
- Content: Netflix, YouTube, Prime Video, Hulu, Disney+...

## Audio

- Speaker: 2 x 5W
- Dolby Digital: Yes
- Dolby Digital Plus: Yes

## Accessories

- Power Plug: 120W (19V/6.32A)
- AC cord x1
- Bluetooth Remote Control x1
- User Manual x1
- Wiping Cloth x1

## Connectivity

- Input: USB2.0 x 2
- HDMI IN (ARC) x 1
- DC-IN x 1
- Output: 3.5mm Audio x 1
- WiFi: Dual-band 2.4/5GHz, 802.11a/b/g/n/ac
- Bluetooth: Bluetooth 5.1/BLE

## Dimensions / Weight

7.68 x 7.68 x 1.87 Inches / 2.82 lbs

