

Cyber Series Integrated Motorized Screen



"Cyber" began in the early 21st century, it often used to describe beautiful fashion or colorful personality and image, such as cyber-look and cyber-space etc. Grandview created Cyber series in 2004, beauties of the flow line for its slim profile, good quality, and excellent use in intelligent way that we gave it a name-"Cyber".

Cyber series becomes a very famous brand in the world.

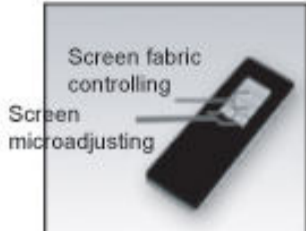


Product Features

Convenient

Infrared Remote Controller

All the required heights are set by controller. The effective distance is 8m. Up, down stop buttons are for controlling of screen.



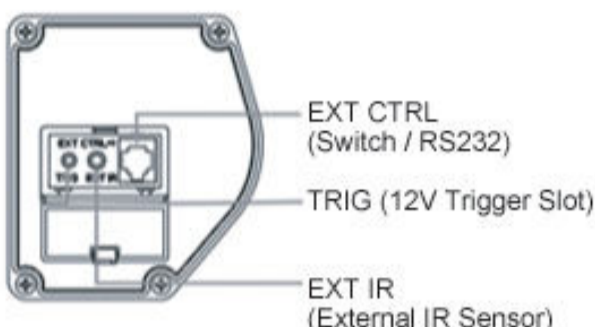
Infrared Remote controller



Infrared Receiver External Extension

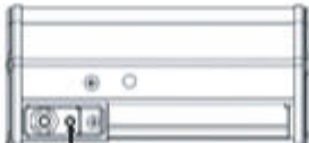
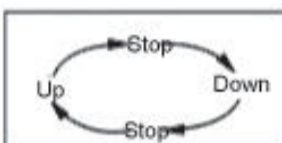
External Control System Instruction

- There are 4 control systems:
- A. Manual Control
 - B. Infrared Remote Control
 - C. Trigger Control
 - D. In-Line Switch



A. Manual Control

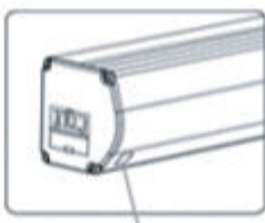
The button of manual control is under casing. This button is cyclic control.



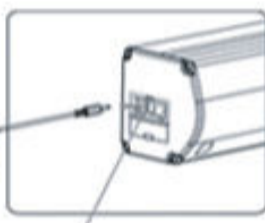
Manual Control

B. IR control

- 1. Inside receiver can be controlled by controller if the receiving window in eye.
- 2. If the receiving window is block or the screen needs to hidden installation, please plug in external infrared remote receiver to EXT IR.



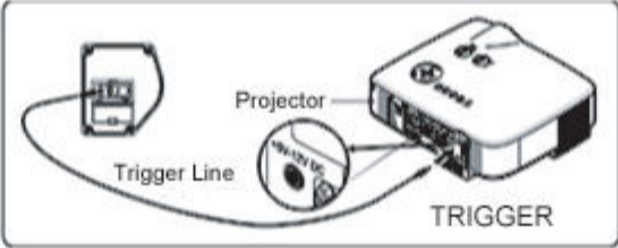
Built-in IR control receiver



External IR control receiver

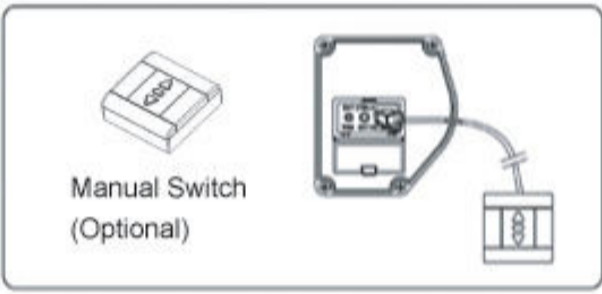
C. Trigger Control

- 1. For connecting screen and projector, please insert 2.5mm plug into TRIG hole of left end cap and insert 3.5mm plug into TRIGGER hole.
- 2. After connecting the device, the screen can extend and retract automatically.



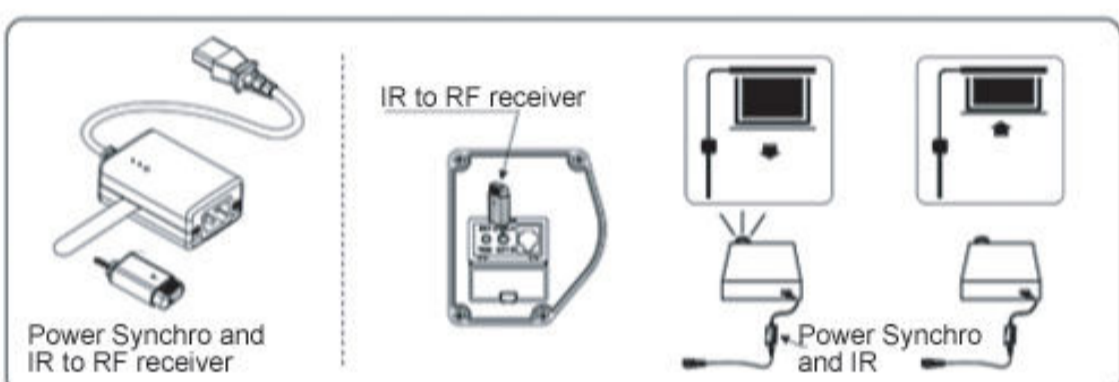
D. Wall In-Line Switch (Optional)

If choose Wall In-Line Switch, please insert RJ11 plug of Wall In-Line Switch into EXTCTRL receiving hole of screen. Note: use a cable connecting for long distance.



E. Synchro Power Relay (Optional)

After inserting synchro converter to EXTIR hole, you can use FM wireless controller with 12V trigger to contrl the screen up and down.



Multi-Installation

Multi-Functional Mounting Brackets

(Ceiling Mount, Wall Mount)

Wall Mount, Ceiling Mount and Suspended installation are available. Brackets can be adjusted horizontally at any desired point on the casing. Tightening screens ensure the screen remians locked and secure.



Ornament Board is optional(Hidden, Ceiling)

Grandview's Ornament Board is especially designed for hidden installation, it is optional for atual situation,and can be also used in Grille-Ceiling screen.



Hidden Installation



Ceiling Installation

Accessories

- 1. Infrared Remote controller (1 pcs)
- 2. Infrared Receiver External Extension (1 pcs)
- 3. Bracket (2 pcs)
- 4. Power Line (1 set)



Infrared Remote controller



Infrared Receiver External Extension

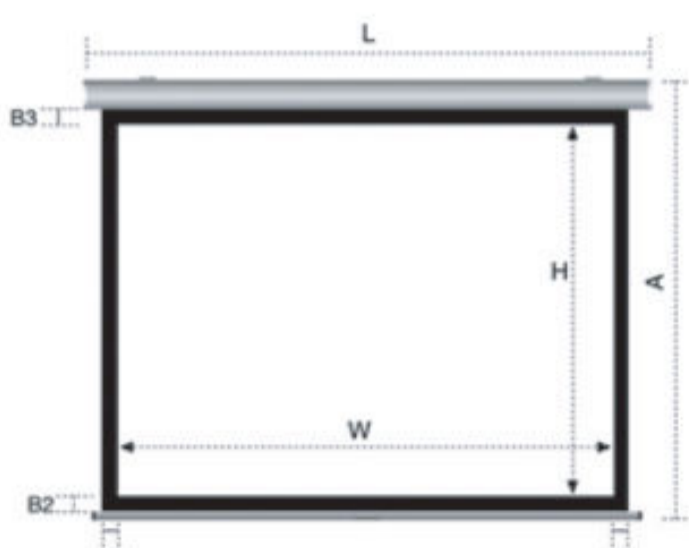


Bracket



Power Line

Product Specifications



Format	Specification (inch)	Viewing Area W*H(mm)	L (mm)	B1 (mm)	B2 (mm)	B3 (mm)
4:3	72	1460x1100	1670	30	50	80
	84	1710x1280	1960	50	50	80
	100	2030x1524	2280	50	50	80
	120	2400x1800	2650	50	50	80
	150	3050x2286	3348	50	50	80
	180	3620x2715	3920	50	50	80
	200	4020x3015	4320	50	50	80
16:9	77	1704x958	1954	50	50	850
	92	2030x1145	2280	50	50	650
	100	2214x1245	2464	50	50	550
	106	2340x1320	2584	47	50	500
	120	2656x1494	2906	50	50	400
	133	2945x1656	3243	50	80	300
	150	3320x1867	3620	50	80	300
1:1	180	3984x2240	4284	50	80	300
	60	1520x1520	1720	25	50	80
	70	1780x1780	1976	23	50	80
	84	2030x2030	2280	50	50	80
	96	2340x2340	2584	47	50	80
	120	3050x3050	3384	50	80	80

Sizes and specifications are subject to change at anytime. [The tolerance for L is about ± 5mm(3/16in)]