

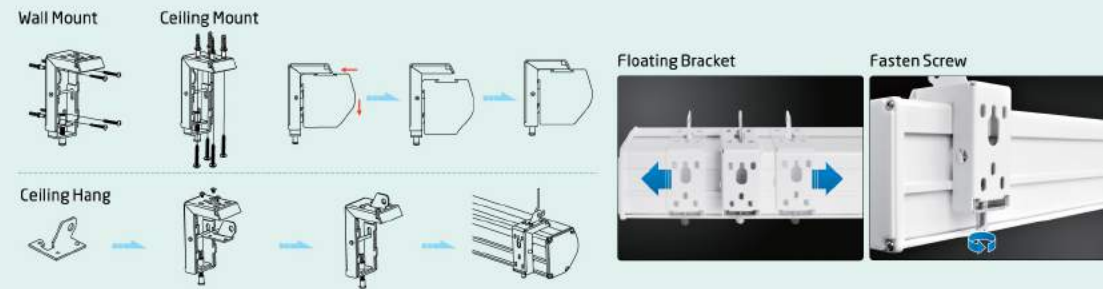
**CYBER** Series  
Projection Screen

China Well-known Trademark

**GRANDVIEW**  
GRANDVIEW REPRODUCING GENUINE COLORS

### Universal Bracket

Suitable for either wall mount, ceiling mount or ceiling hang. The bracket can slide horizontally at the back of the casing to match different installation positions.



### Standard Accessories

Motorized Screen and Manual Screen



### Intelligent Motorized Screen



### Optional Accessories for Intelligent Motorized Screen

### Power Relay

The emitter is installed at the projector end and the receiver is connected to the "EXT IR" plug on the screen, when the projector is triggered on/off the screen would open/close automatically.



### RS485 Wall Switch

RS485 Wall Switch is an external screen controller, integrated with RS485 and USB interface, it can be connected to the "EXT CTRL" slot on the screen end to control the screen.

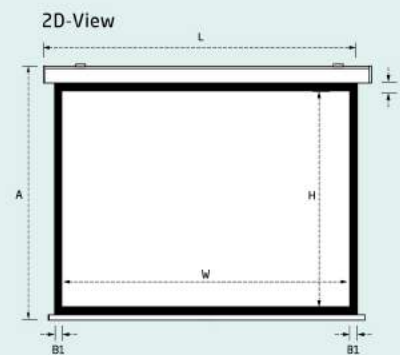


### Specification

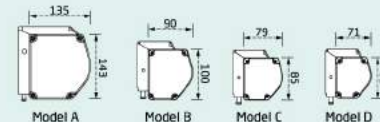
Driving System	Format	Specification (Inch)	Viewing Area (W x H)	A	B3	Package (L x H x W)	Net Weight (Kg)	Power (voltage220v)
Intelligent Motorized Screen CB-Mlxxx	4:3	72	1460*1100	1347	80	1670*100*90	9.1	115W
		84	1710*1280	1524	80	1960*100*90	10.5	115W
		100	2030*1524	1767	80	2280*100*90	13.8	115W
		120	2400*1800	2047	80	2650*100*90	15.3	115W
		150	3050*2286	2589	80	3348*143*135	29.4	115W
		180	3620*2715	3118	80	3920*143*135	38.0	250W
		200	4020*3015	3018	80	4320*143*135	49.0	250W
		60	1328*747	1900	1000	1578*100*90	7.8	115W
	In-line Switch Motorized Screen CB-Mxxx	70	1550*871	1974	950	1800*100*90	9.5	115W
		80	1770*996	1949	800	1976*100*90	10.3	115W
		92	2030*1145	1948	650	2280*100*90	13.8	115W
		100	2214*1245	1948	550	2464*100*90	14.5	115W
		106	2340*1320	1973	500	2584*100*90	15.1	115W
		120	2656*1494	2047	400	2906*100*90	14.3	115W
		133	2945*1656	2179	300	3243*143*135	29.2	115W
		150	3320*1867	2390	300	3620*143*135	40.2	250W
Manual Screen CB-Pxxx	4:3	180	3984*2240	2763	300	4284*143*135	51.5	250W
		200	4428*2491	3016	300	4730*143*135	58.0	250W
		72	1460*1100	1319	80	1584*82*71	6.5	—
		84	1710*1280	1499	80	1864*82*71	8.1	—
		100	2030*1520	1747	80	2204*85*79	10.5	—
		120	2340*1755	1998	80	2508*100*90	13.8	—
		150	2817*2110	2350	50	2992*100*90	19.6	—
		70	1550*871	1760	750	1725*82*71	7.1	—
	16:9	80	1770*996	1789	650	1901*82*71	8.4	—
		92	2030*1145	1812	500	2204*85*79	10.5	—
		100	2214*1245	1908	500	2389*100*90	12.7	—
		106	2340*1320	1983	500	2509*100*90	13.8	—
		120	2656*1494	2054	400	2830*100*90	16.2	—

Note:

1. Unremarked measurements are default to be MM.
2. Side borders B1 are both 50mm.
3. For recess-ceiling installation, the length/width/height of the groove need to be added by 100mm/60mm/60mm respectively.
4. Above parameters could be changed due to product improvement.



End Cap View



**GRANDVIEW®**

GRANDVIEW SCREEN ( CANADA ) CO., LTD.  
ADD: #11-3751 North Fraser Way, Marine Way Business Centre,  
Burnaby, BC, Canada V5J5G4  
TEL: 1-604.412.9777 FAX: 1-604.412.9796  
<http://www.grandviewscreen.ca>

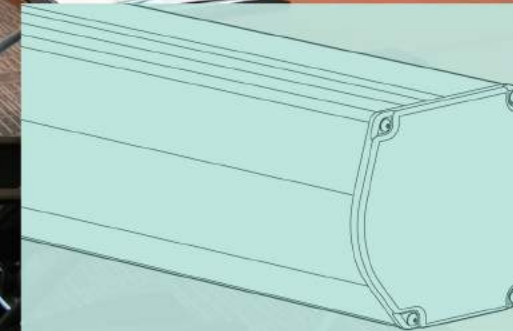
**GRANDVIEW CRYSTAL SCREEN CO., LTD.**  
Add: Federal Industry Zone, NO.363, Yushan Road W.  
Shatou,Panyu, Guangzhou, Guangdong Prov., China  
Tel: 020-84899499 Fax: 020-84805299  
<http://www.grandviewscreen.com>



**RoHS**  
2002/95/EC

**CYBER Series**  
Projection Screen

Manual Screen with Speed Reduction  
Motorized Screen  
Integrated Motorized Screen







CYBER Series  
Projection Screen

Fabric Features

- **Last-long Flatness**  
With four layer structure including Fiberglass, Stretchness less than 1% which ensures the last-long flatness
- **Sophisticated Images**  
Engraved with optical microgroove on the surface, with resolution more than 125 line pairs per mm, which ensures the sharpness of the projected images
- **Color Accuracy**  
The reflection light are evenly distributed with less than 60K difference between incident angle and reflection angle
- **Wide Color Range**  
With high contrast processment, while maintaing the color accuracy and color range is widely presented to provided a more vivid image

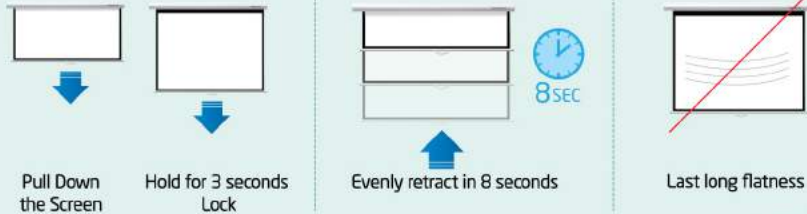
Fabric Types

<div>WM Matte White</div> <div>GM Matte Gray</div> <div>GB Glass Beaded</div>	<div>160° Viewing Angle</div> <div>1.0 Gain</div> <div>Fireproof</div> <div>Environmental Friendly</div> <div>Anti-Mold</div> <div>Waterproof</div> <div>Washable</div>	<div>Structure</div> <div>Screen Surface (embossed structure)</div> <div>PVC</div> <div>Fiber glass</div> <div>PVC</div>
	<div>160° Viewing Angle</div> <div>0.8 Gain</div> <div>Fireproof</div> <div>Environmental Friendly</div> <div>Anti-Mold</div> <div>Waterproof</div> <div>Washable</div>	
	<div>70° Viewing Angle</div> <div>2.5 Gain</div> <div>Fireproof</div> <div>Environmental Friendly</div> <div>Anti-Mold</div> <div>Waterproof</div> <div>Washable</div>	



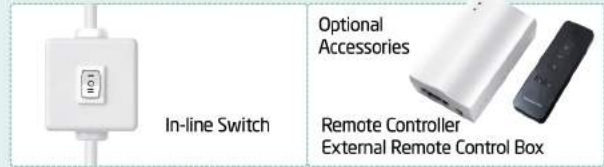
Cyber Manual Screen with Speed Reduction

- **Limitless Positioning**  
With Limitless Positioning Structure, the screen can be stopped by holding the handle for 3 seconds at any position.
- **Slow Retraction**  
With Slow Retraction System to allow the screen retracting back slowly within 8 seconds, which can prevent the safety issue cause by lower bar hitting casing.
- **Wrinkle Free**  
When the screen is fully retracted the positioning system is lock off and the fabric is not stretched by the spring system, which can prevent the wrinkle cause by long time stretchness from the spring system.



Cyber Motorized Screen

- **In-line Switch with driect control and high stability**
- **Optional with IR / RF remote control**



Cyber Integrated Motorized Screen

In-built with IR control function and designed with interfaces for wall switch and external central control to control the screen remotely and intelligently.

