

GIOTTO HOME CINEMA

GIOTTO HOME CINEMA is the most innovative **UPGRADABLE** electric **IN-CEILING** projection screen on the market. Its mechanical construction makes it an ideal and unique solution for in-ceiling installations both in residential and AV professional environments.

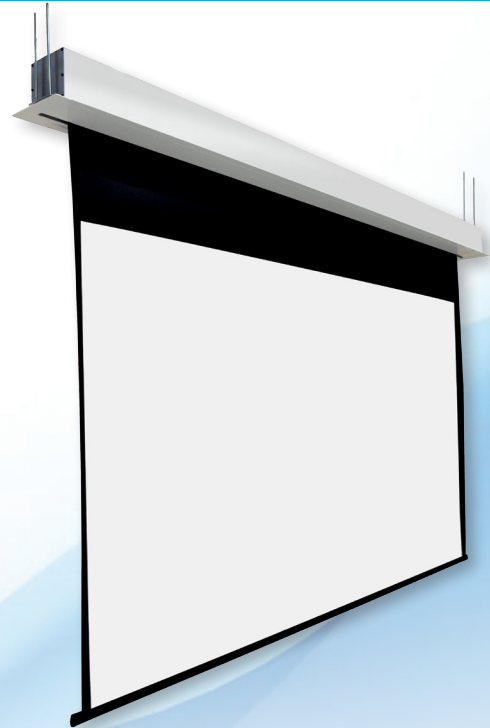
The GIOTTO is easy to mount and has the possibility to install the roller tube with projection cloth **after** the **installation** is finished.

This peculiar feature allows also to easily substitute the projection surface if required by the customer for maintenance reasons or necessity to upgrade the projection cloth.

This model has black side borders 5 cm. of width and an extra black top drop of 30 cm. included.

Moreover it is also possible to customize the product asking for a **DIFFERENT housing COLOUR**.

It is available with a wide range of projection surfaces and in all possible bespoke measures.



- Lower trapdoor offers the possibility to **OPEN** it **MANUALLY** for maintenance or projection surface upgrade purposes
- **REMOVABLE** side parts of the bezel for an easy housing installation
- Fast and silent motor provides smooth and quiet rolling down
- Housing specific for IN-CEILING use manufactured from aluminum sprayed with white epoxy powders (RAL 9010)
- Black dowel bar: height 35 mm. – depth 20 mm.
- On/off switcher included
- Two ceiling mounting brackets with four threaded rods 100 cm. long
- Flame retardant projection surfaces
- Power cable located at RIGHT side of the screen housing, seen from the front
- Side black borders of 5 cm. width, black top drop of 30 cm. and black dowel bar 35 mm. high
- Reverse wound (OPTIONAL)
- **DIFFERENT HOUSING COLOURS AVAILABLE** (OPTIONAL)
- **AVAILABLE ACCESSORIES:** RF remote control with integrated or external receiver, Interface switch 12 Volt, Low voltage contact interface

TECHNICAL SPECIFICATIONS

| 4:3 Ratio Viewing area WxH | 16:9 Ratio Viewing area WxH | 16:10 Ratio Viewing area WxH | Overall dimensions | | | Front projection surfaces | | Approx. net weight |
|----------------------------------|-----------------------------------|------------------------------------|-----------------------|-------------|-----------|------------------------------|-----------|-----------------------|
| cm. 160x120 | cm. 160x90 | cm. 160x100 | A cm. 200 | B cm. 190,5 | C cm. 173 | White | gain 1.2 | Kg. 24 |
| cm. 180x135 | cm. 180x101 | cm. 180x112 | A cm. 220 | B cm. 210,5 | C cm. 193 | Matte White | gain 1.2 | Kg. 27 |
| cm. 200x150 | cm. 200x112 | cm. 200x125 | A cm. 240 | B cm. 230,5 | C cm. 213 | Lumi Grey | gain 0.8 | Kg. 30 |
| cm. 220x165 | cm. 220x124 | cm. 220x137 | A cm. 260 | B cm. 250,5 | C cm. 233 | Cinesound | gain 0.7 | Kg. 33 |
| cm. 250x190 | cm. 250x140 | cm. 250x156 | A cm. 290 | B cm. 280,5 | C cm. 263 | Microperforated | gain 1.1 | Kg. 37 |
| cm. 300x225 | cm. 300x169 | cm. 300x187 | A cm. 340 | B cm. 330,5 | C cm. 313 | LumiGrey Microperforated | gain 0.8 | Kg. 45 |
| cm. 350x265 | cm. 350x197 | cm. 350x219 | A cm. 390 | B cm. 380,5 | C cm. 363 | High Matte* | gain 1.25 | Kg. 52 |
| cm. 400x300 | cm. 400x225 | cm. 400x250 | A cm. 440 | B cm. 430,5 | C cm. 413 | Hi-Light* | gain 2.3 | Kg. 60 |
| cm. 450x340 | cm. 450x253 | cm. 450x281 | A cm. 490 | B cm. 480,5 | C cm. 463 | | | Kg. 67 |

*Giotto Home Cinema is available with High Matte and Hi-Light surfaces up to 250x190 cm. (4:3 ratio), 300x169 cm. (16:9 ratio) and 300x187 cm. (16:10 ratio).

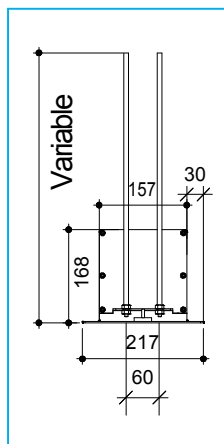
Warranty: 5 years on the motor – 24 months on the other components

TECHNICAL SPECIFICATIONS

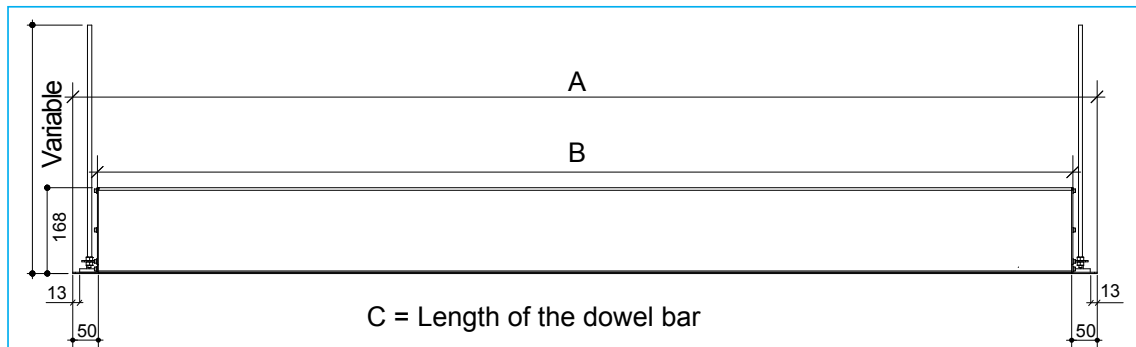
LENGTH OF THE HOLE to be made in the false ceiling

| SCREEN MODEL | LENGTH |
|--------------------|--------------------------------------|
| GIOTTO HOME CINEMA | Width of the viewing area + cm. 38,5 |

WIDTH OF THE HOLE to be made in the false ceiling: cm. 16,5



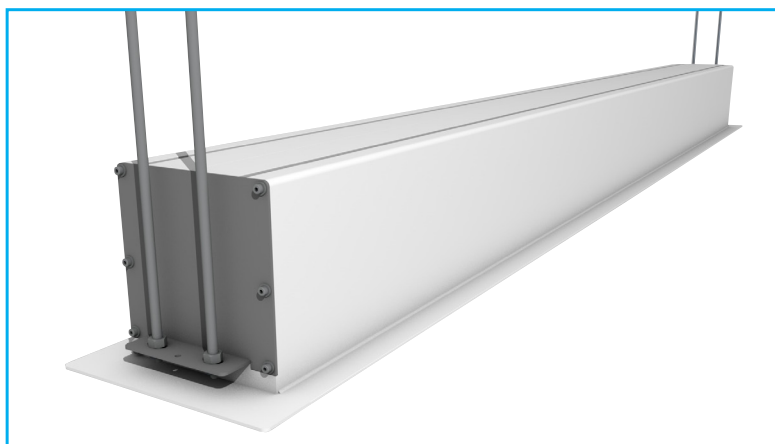
Side View



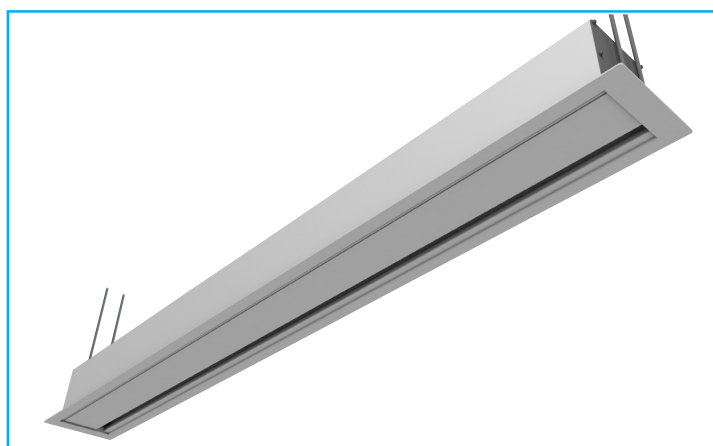
Front View



Possibility to **OPEN MANUALLY** the lower **TRAPDOOR** for maintenance or projection surface upgrade purposes.



Cabinet Side View



Bottom View Screen Closed

Motor characteristics

- **Measures up to 300 cm. of width**
Power: 6 Nm
Speed: 17 rpm
Consumption: 137 W
Certification: IMQ
- **Measures above 300 cm. of width**
Power: 10 Nm
Speed: 17 rpm
Consumption: 156 W
Certification: IMQ

Stadium Konferenciatechnika Kft.
9700 Szombathely,
Vörösmarty M. u. 39.
Tel.: 94/325-855
Fax: 94/322726
Mobil: 30/9748-241

* The measures in the drawings are expressed in millimetres.