

GRANDVIEW®



GPCK-MA

Perfectly invisible  
and easily show up

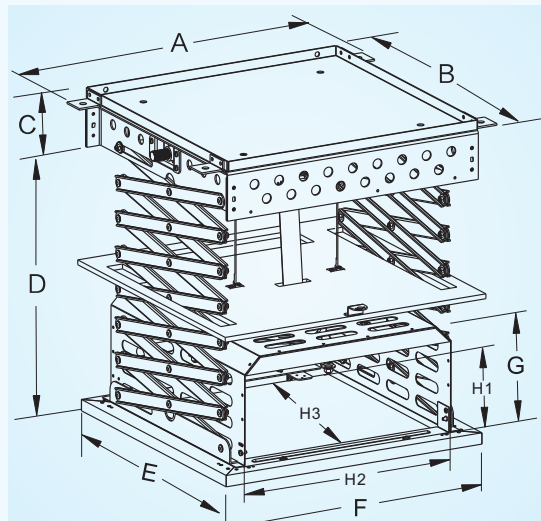
GPCK Series Recessed-Ceiling Motorized Projector Lift follows construction design aesthetics, does not affect the indoor appearance, and perfectly combines with the surrounding environment.

## GPCKseries Recessed-Ceiling Motorized Projector Lift

- |              |              |            |
|--------------|--------------|------------|
| ■ GPCK-MA    | ■ GPCK-MB    | ■ GPCK-MC  |
| GPCK-MA1600  | GPCK-MB1800  | GPCK-MC250 |
| GPCK-MA1600L | GPCK-MB1000  |            |
| GPCK-MA2700  | GPCK-MB1000B |            |
| GPCK-MA2700L |              |            |
| GPCK-MA4600L |              |            |



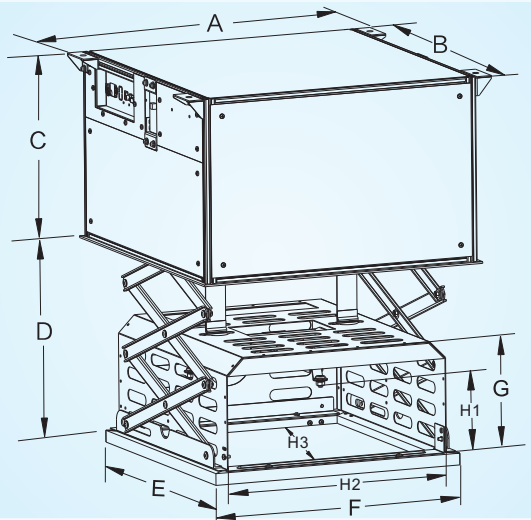
Small-Sized Recessed-Ceiling Motorized Projector Lift  
GPCK-MB



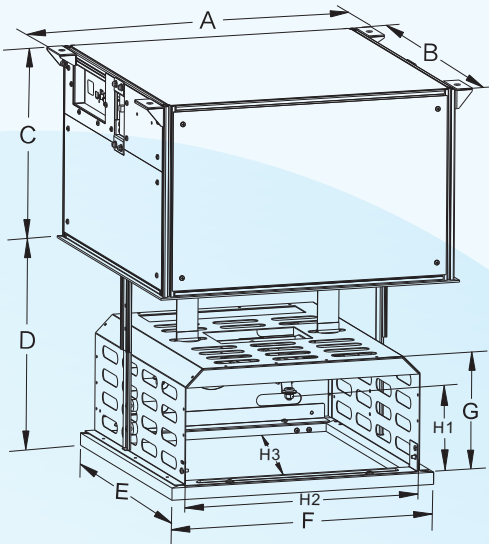
- GPCK-MB1800  
GPCK-MB1000
- Double Positioning
  - Automatic Balancing Mechanism
  - Brake Mechanism
  - High-Strength Sheet Metal Linkage
  - Ornament Baffle
  - Cable Management
  - Control System
- Maximum Weight Capacity: 12KG
- Standard Accessories :  
FM Wireless Emitter (1pc)  
Internal VGA、Video Leads
- Control System :  
RF Remote Control、  
RS232/485、Wall-Switch

Seal Small-Sized Recessed-Ceiling Motorized Projector Lift  
GPCK-MB(B)

- GPCK-MB1000B
- Double Positioning
  - Automatic Balancing Mechanism
  - High-Strength Sheet Metal Linkage
  - Completed Protection
  - Cable Management
  - Control System
- Maximum Weight Capacity: 12KG
- Standard Accessories :  
FM Wireless Emitter (1pc)  
Internal VGA、Video Leads
- Control System :  
RF Remote Control、  
RS232/485、Wall-Switch



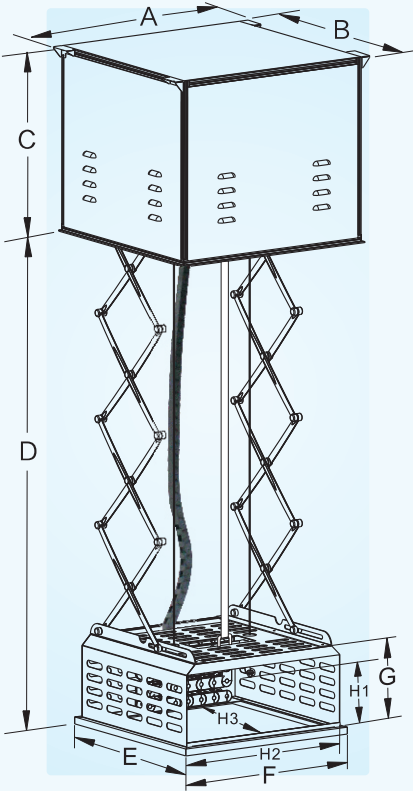
Seal Small-Sized Recessed-Ceiling Motorized Projector Lift  
GPCK-MC



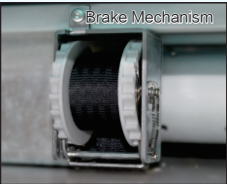
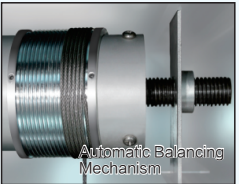
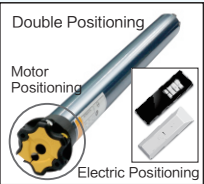
- GPCK-MC250
- Suitable for short separation ceiling (the distance between roof and ceiling must be larger than 330mm)
  - Double Positioning
  - Fireproof Strap
  - Completed Protection
  - Flexible Sliding Scale
  - Cable Management
- Maximum Weight Capacity: 12KG
- Standard Accessories :  
FM Wireless Emitter (1pc)  
Internal VGA、Video Leads
- Control System :  
RF Remote Control、  
RS232/485、Wall-Switch

GPCKseries  
Recessed-Ceiling  
Motorized Projector Lift

GPCK-MA



Maximum Weight Capacity: 15Kg  
Power Consumption: 170W  
Voltage: 230V/50Hz  
Radio Frequency: 868MHz

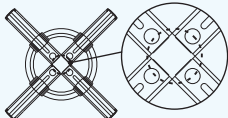
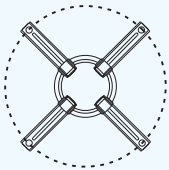


Eight Features (GPCK-MA Series)

- 1.Double Positioning System provides safety and convenience to users. The safety positioning of motor is set by factory, and the height of stopping can be adjusted automatically by electric positioning.
- 2.Automatic Balancing Mechanism ensures the dragline and suspending cage vertically when extending or retracting, avoid any digression or noise caused by the slant of the dragline.
- 3.The Brake Mechanism is designed when the dragline is broken, the motor brake is out of control or the steel cable loose accidentally, the safety device will operate automatically and prevent the falling of case and improve the security in high-ceiling condition.
- 4.High-Strength Aluminum Linkage is die-casting and with excellent texture, high-strength and rustproof, very light and it can reduce the lift-weight and keep the balance.
- 5.Completed Protection prevents the projection equipment against the impact of external environment, and avoid the leakage of the cool air.
- 6.Ornament Baffle matches prefectly with different types of ceiling, when extending the case, it may completely cover the hatch that occurs.
- 7.Cable Management, which is allocated for the users to put Power cord, VGA, RGB or HDMI cables inside, easily bend and stretch,customized size are available.
- 8.Multi-Control Systems are available (RF Remote Control, RS232/485, Wall-Switch)



Scope for installation (Installation hole of projector):  
Maximum scope for installation:345mm diameter  
Minimum scope for installation:45mm diameter  
Note: Connect the installation arms to the projector conversely for different installation holes of projector.



Product Specifications

Model	Size							Suitable Size for Projectors		
	A	B	C	D	E	F	G	H1	H2	H3
GPCK-MA1600	704	670	600	0~1600	586	586	250	180	530	470
GPCK-MA1600L	704	770	600	0~1600	686	586	270	200	530	570
GPCK-MA2700	704	670	685	0~2700	586	586	250	180	530	470
GPCK-MA2700L	704	770	685	0~2700	686	586	270	200	530	570
GPCK-MA4600L	744	744	800	0~4600	686	686	270	200	630	570
GPCK-MB1800	510	510	110	360~1800	520	520	200	147	400	400
GPCK-MB1000	510	510	110	360~1000	520	520	200	147	400	400
GPCK-MB1000B	600	550	345	0~930	483	483	200	147	400	400
GPCK-MC250	600	550	345	0~350	483	483	200	147	400	400

\* The distance between roof and ceiling must be larger than minimum of C+D