



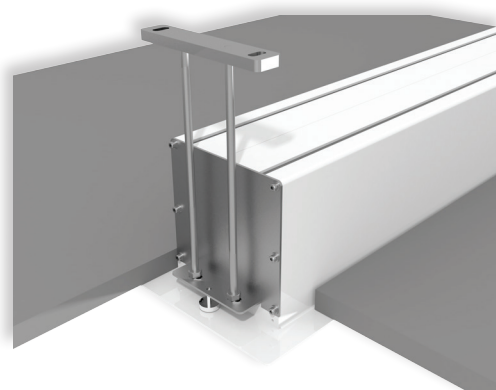
GIOTTO HOME CINEMA is the most innovative UPGRADABLE electric in-ceiling projection screen on the market. Its mechanical construction makes it an ideal and unique solution for in-ceiling installations both in residential and AV professional environments.

The Giotto is easy to mount and has the possibility to install the roller tube with projection cloth after the installation is finished.

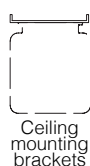
This peculiar feature allows also to easily substitute the projection surface if required by the customer for maintenance reasons or necessity to upgrade the projection cloth.

This model has black side borders 5 cm. of width, 5 cm. black bottom border and a black top drop of 30 cm. included.

Available in 4:3, 16:9 and 16:10 formats or bespoke sizes.



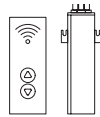
LEFT SIDE VIEW



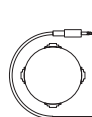
Ceiling mounting brackets



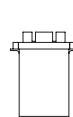
n.1 On/off switcher



Kit RF Remote control with external receiver



Interface switch 12 volt



Low voltage contact interface



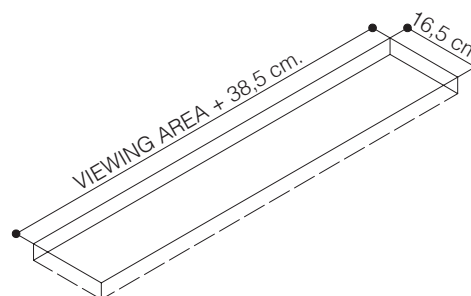
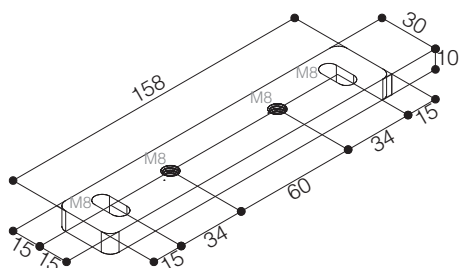
Nm 9
Rpm 26

Faster and quiet motor

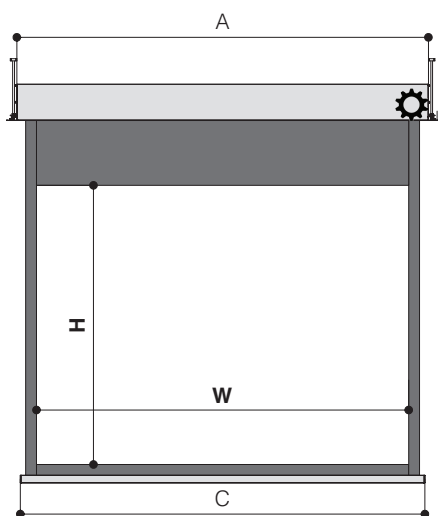
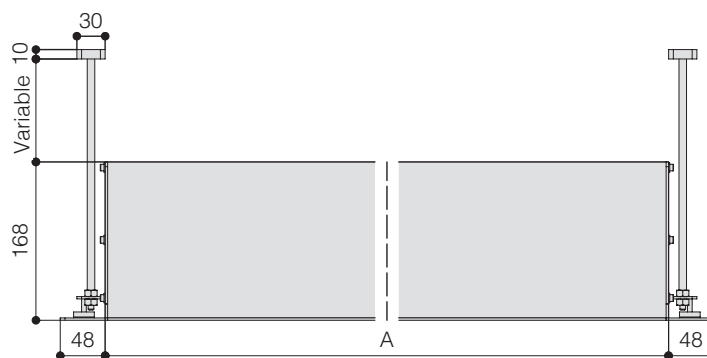
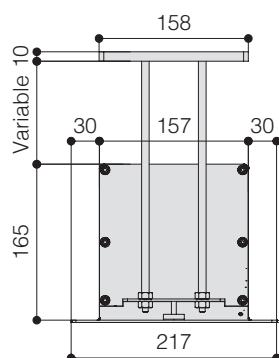
INCLUDED

OPTIONAL pag 62-63

DIMENSIONS OF THE HOLE TO BE MADE IN THE FALSE CEILING



HOUSING FRONT VIEW



- Silent motor system provides a smooth and quiet operation

- | | | |
|------------------|----------------------|---------------------|
| | <u>Up to 300 cm.</u> | <u>From 300 cm.</u> |
| • Power: | 6 Nm | 10 Nm |
| • Speed: | 17 rpm | 17 rpm |
| • Power supply: | 230V / 50 Hz | 230V / 50 Hz |
| • Consumption: | 137 W | 156 W |
| • Certification: | IMQ | IMQ |
- Housing manufactured from aluminium
 - Lower part of the housing , trap door and bezel sprayed with white epoxy powders (RAL 9010)
 - Black dowel bar: height 35 mm. - depth 20 mm.
 - Two ceiling mounting brackets with four threaded rods 100 cm. long
 - On/Off switcher included
 - Flame retardant projection surfaces - classification M1 and B1
 - Side black borders of 5 cm. width, black bottom border of 5 cm. and black top drop of 30 cm.
 - Minimum height required in the false ceiling: 17 cm
 - Screen housing available in different colours (*optional*)

DIMENSIONS <small>measures in cm</small>				
4:3 Ratio Viewing area (WxH)	16:9 Ratio Viewing area (WxH)	16:10 Ratio Viewing area (WxH)	Overall dimensions A - C	Approx. net weight (Kg)
160 x 120	160 x 90	160 x 100	190,5 - 174	24
180 x 135	180 x 101	180 x 112	210,5 - 194	27
200 x 150	200 x 112	200 x 125	230,5 - 214	30
220 x 165	220 x 124	220 x 137	250,5 - 234	33
250 x 190	250 x 140	250 x 156	280,5 - 263	37
300 x 225	300 x 169	300 x 187	330,5 - 314	45
350 x 265	350 x 197	350 x 219	380,5 - 364	52
400 x 300	400 x 225	400 x 250	430,5 - 414	60
450 x 340	450 x 253	450 x 281	480,5 - 464	67

PROJECTION CLOTHS			
Front projection surfaces	Gain		
White	1.2		
Matte White	1.2		
Lumi Grey	0.8		
Microperforated	1.1		
Lumi-Grey Microperforated	0.8		
Cinesound*	0.7		
Fibre Matte*	1.25		
Hi-Light*	2.3		

*Limited in height

Warranty: 5 years on the motor - 24 months on the other components