

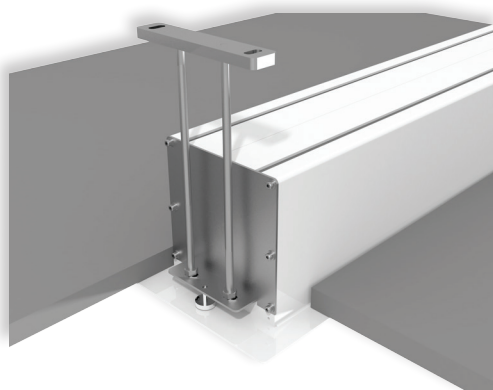


GIOTTO TENSIONED is the most innovative UPGRADABLE electric **in-ceiling** projection screen on the market. Its mechanical construction makes it an ideal and unique solution for in-ceiling installations both in residential and AV professional environments.

The Giotto is easy to mount and has the possibility to install the roller tube with projection cloth after the installation is finished and to substitute the projection surface when required.

Giotto Tensioned has black side borders cut in hour-shape glass that together with the tension system that assures a perfect flatness to the projection surface. Moreover, a 5 cm. black bottom border and a black top drop of 30 cm. is included.

Available in 4:3, 16:9 and 16:10 formats or bespoke sizes.



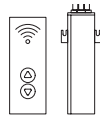
LEFT SIDE VIEW



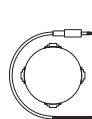
Ceiling mounting brackets



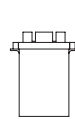
n.1 On/off switcher



Kit RF Remote control with external receiver



Interface switch 12 volt



Low voltage contact interface

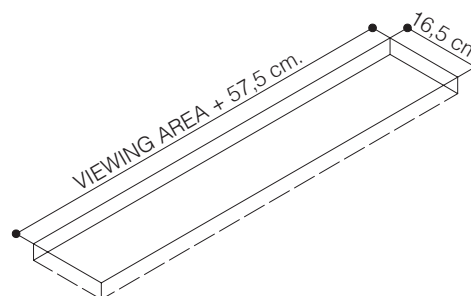
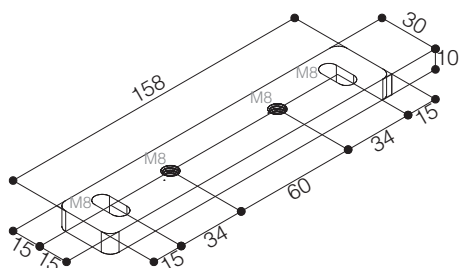


Faster and quiet motor

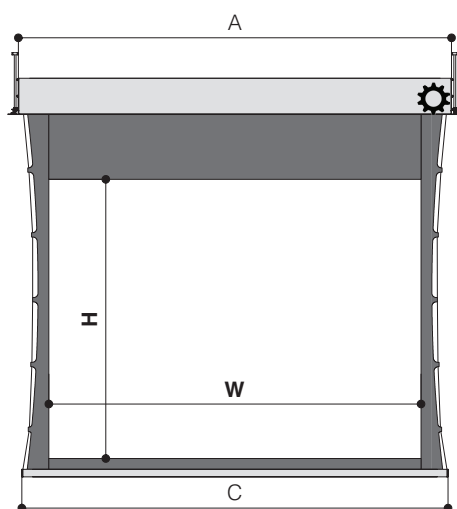
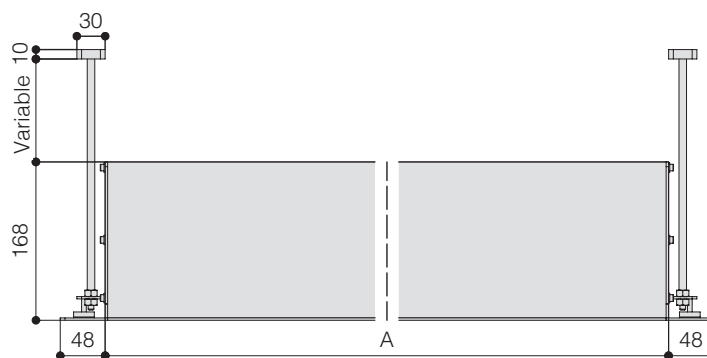
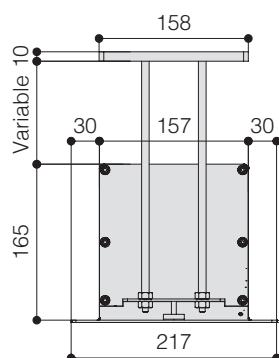
INCLUDED

OPTIONAL pag 62-63

DIMENSIONS OF THE HOLE TO BE MADE IN THE FALSE CEILING



HOUSING FRONT VIEW



- Silent motor system provides a smooth and quiet operation

- | | | |
|------------------|----------------------|---------------------|
| | <u>Up to 250 cm.</u> | <u>From 250 cm.</u> |
| • Power: | 6 Nm | 10 Nm |
| • Speed: | 17 rpm | 17 rpm |
| • Power supply: | 230V / 50 Hz | 230V / 50 Hz |
| • Consumption: | 137 W | 156 W |
| • Certification: | IMQ | IMQ |
- Housing manufactured from aluminium
 - Lower part of the housing , trap door and bezel sprayed with white epoxy powders (RAL 9010)
 - Black dowel bar: height 35 mm. - depth 20 mm.
 - Two ceiling mounting brackets with four threaded rods 100 cm. long
 - On/Off switcher included
 - Flame retardant projection surfaces - classification M1 and B1
 - Side black borders of 5 cm. width (in the narrowest point), black bottom border of 5 cm. and black top drop of 30 cm.
 - Hour-shape glass tensioning system to provide perfect flatness
 - Minimum height required in the false ceiling: 17 cm
 - Screen housing available in different colours (*optional*)

DIMENSIONS <small>measures in cm</small>				
4:3 Ratio Viewing area (WxH)	16:9 Ratio Viewing area (WxH)	16:10 Ratio Viewing area (WxH)	Overall dimensions A - C	Approx. net weight (Kg)
160 x 120	160 x 90	160 x 100	209,5 - 194	27
180 x 135	180 x 101	180 x 112	229,5 - 214	30
200 x 150	200 x 112	200 x 125	249,5 - 234	33
220 x 165	220 x 124	220 x 137	269,5 - 254	35
250 x 190	250 x 140	250 x 156	299,5 - 284	39
300 x 225	300 x 169	300 x 187	349,5 - 334	45
350 x 265	350 x 197	350 x 219	399,5 - 384	52
400 x 300	400 x 225	400 x 250	449,5 - 434	58

PROJECTION CLOTHS			
Front projection surfaces	Gain		
Matte White	1.2		
Lumi Grey	0.8		
Microperforated	1.2		
Lumi Grey Microperforated	0.8		
Cinesound*	0.7		
Bright Contrast 3D*	1.4		

*Limited in height

Warranty: 5 years on the motor - 24 months on the other components