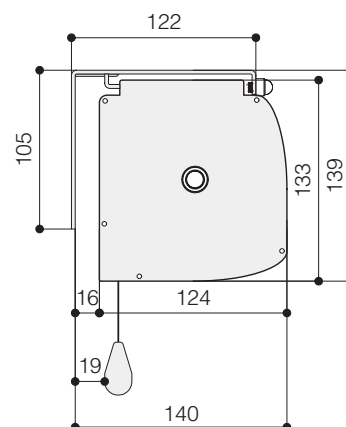


from 350 cm. to 400 cm. wide



False ceiling trim kit
(optional - for details see p. 48)


HOUSING DIMENSIONS



TECHNICAL SPECIFICATIONS

- Silent motor system provides a smooth and quiet operation

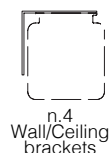
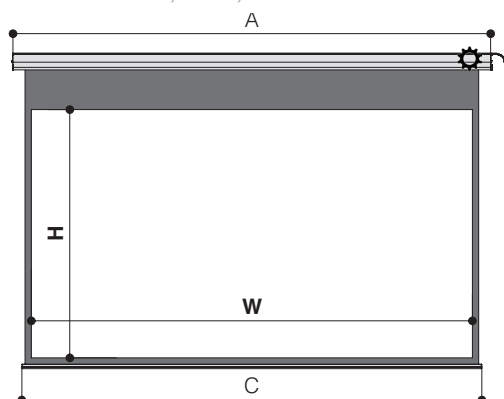
- Power: **10 Nm**
- Speed: **17 rpm**
- Power supply: **230V / 50 Hz**
- Consumption: **156 W**
- Certification: **IMQ**

 **Nm 9**
Rpm 26
Faster and
quiet motor
(optional)

- Totally manufactured from aluminium
- Housing dimensions: 124x133 mm. (DxH)
- Housing painted with white epoxy powders (RAL 9010)
- Power cable located at the **right** side of the screen housing seen from the front
- Flame-retardant projection surfaces – classification M1 and B1
- Black side borders of 5 cm., black bottom border of 5 cm., black top drop of 30 cm. and black dowel bar: height 35 mm. depth 20 mm.

The **MAJOR HOME CINEMA** is an electric screen dedicated to the Home Theatre market with high quality features. It has a 30 cm. black drop on the top of the projection surface and black side borders that let perceive a brighter and sharper image.

Available in 4:3, 16:9, 16:10 ratios or customized sizes.



n.4
Wall/Ceiling
brackets



n.1
On/off
switcher

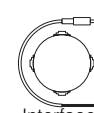
INCLUDED



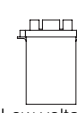
RF Remote
control with
receiver built-in
motor



Kit RF Remote
control with
external
receiver



Interface
switch 12 volt



Low voltage
contact
interface

OPTIONAL pag 62-63

DIMENSIONS measures in cm

4:3 Ratio Viewing area (WxH)	16:9 Ratio Viewing area (WxH)	16:10 Ratio Viewing area (WxH)	Overall dimensions A - C	Approx. net weight (Kg)
350 x 265	350 x 197	350 x 219	371 - 364	29
400 x 300	400 x 225	400 x 250	421 - 414	34

PROJECTION CLOTHS

Front projection surfaces	Gain		Gain
Matte White	1.2	Lumi Grey Microperforated	0.8
Lumi Grey	0.8		
Microperforated	1.1		

Warranty: 5 years on the motor - 24 months on the other components