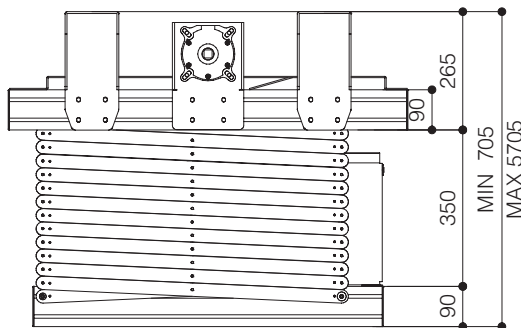


PROJECTOR LIFT

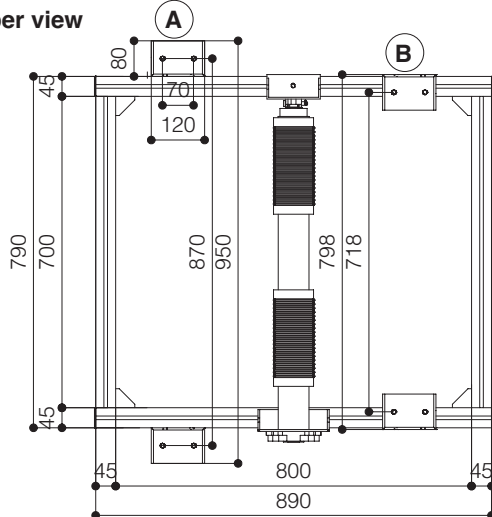
SI-H 500



Side view
closed



Upper view



The **PROJECTOR LIFT SI-H 500** lift is equipped with heavy-duty but silent motor which assures a fast and stable up-down movement of the projector. Furthermore, the motor is provided with an RF remote control and offers the possibility to set three motor limit stops: an upper stop limit, an intermediate one and a down one.

The intermediate stop can be set at the desired height for **projection mode**, whereas the down one can be adjusted up to 500 cm. stroke to be used as **service mode** position.

Also a **safety device** is built-in in order to offer maximum security in case of any failure of the mechanism.

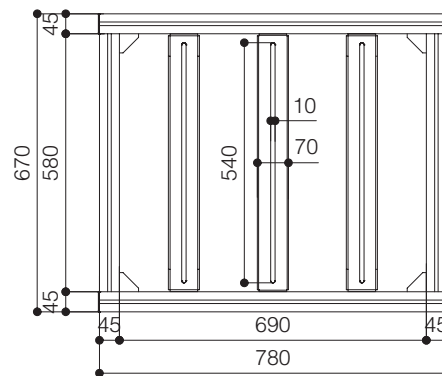
The projector anchoring frame movement is controlled by two strong steel cables that are certified for a maximum load of 350 kg. each.

Optional: Smartbox RF (details p. 62)

A You can see the brackets mounted turned OUTSIDE.

B You can see the brackets mounted turned INSIDE.

Projector anchoring points



TECHNICAL SPECIFICATIONS

| | |
|--|----------------------------|
| POWER SUPPLY | 220-230V - 50HZ |
| MAXIMUM CONSUMPTION | 265 W |
| TORQUE | 60 Nm |
| MOTOR SPEED | 11 rpm |
| DIMENSIONS CLOSED | 798x705x890 (WxHxD in mm) |
| DIMENSIONS OPENED | 798x5705x890 (WxHxD in mm) |
| ROLL UP SPEED | 19 sec/m |
| ROLL DOWN SPEED | 24 sec/m |
| MAXIMUM LOAD OF THE PROJECTOR | 70 Kg |
| NET WEIGHT | 77 Kg |
| CABLE GATHERING SYSTEM (internal dimensions) | 50x18 (WxH in mm) |

Warranty: 5 years on the motor - 24 months on the other components

