



## Sound screen WS102/WS103



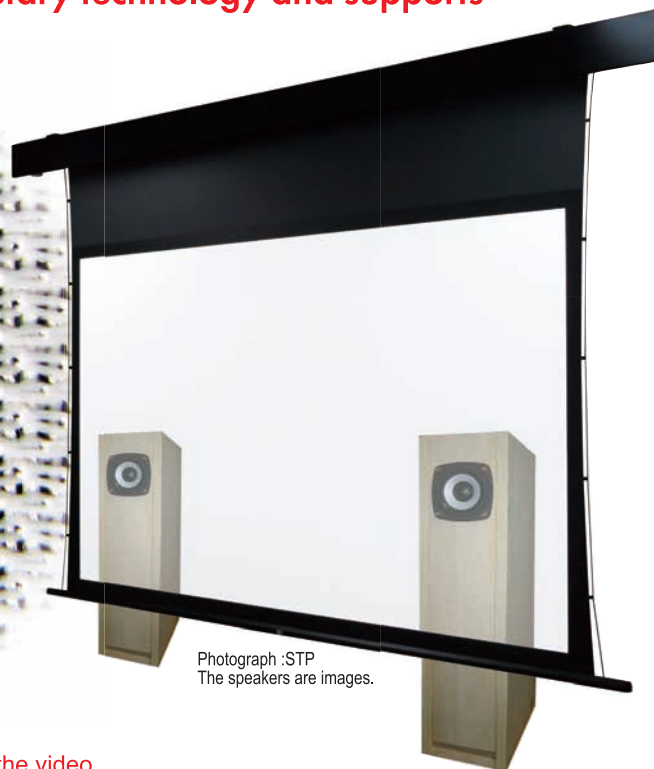
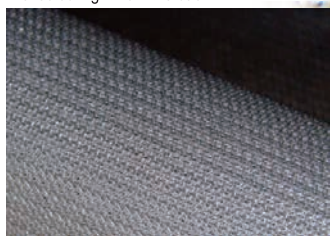
Our faithful video reproducibility has been certified as the world's top-quality standard, THX. "Super AV Knitting" eliminates moire, and "Stainless Sputtering" suppressing video reflection from behind, these are our proprietary technology and supports the world of comfortable sound screens.

Sound mat (WS102/WS103) are mountable on

- STP, SEP (Electromotive screen)
- P A (Fixed frame screen)

Magnified microscope  
x80

Stainless sputtering prevents  
reflected Light from the back



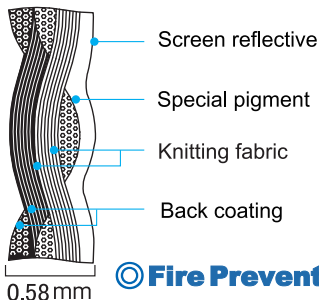
Photograph : STP  
The speakers are images.

Sound screens are used in movie theaters produce sound from just behind the video,  
This screen is optimal for those who focus on sound localization.

- Eco-screen using recycled pet fibers.
- Excellent acoustic properties of THX authentication.
- "Stainless steel sputtering" is used for the back coating, which prevents reflected light from the back.
- A diffusion-based white topcoat faithfully reproduces the video.

■ 5° gain  $0.7 \pm 10\%$

■ Half gain 60° or more



Fire Prevention

WS103

The WS103 has a thickness of 0.7mm, and the fabric characteristics are the same as those of WS102. This is a large-sized sound mat for 130" and bigger sized models

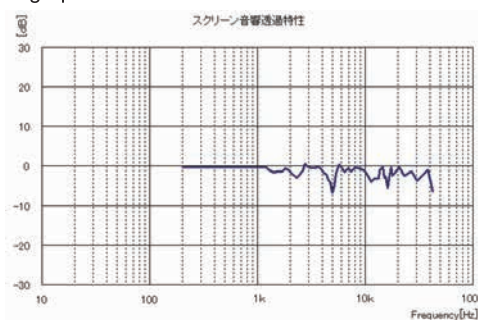


Global standards for theater proposed by Lucas Film  
WS102 /103 was certified as Home-THX after qualification tests for sound transmission characteristics and image quality.

## SOUNDMAT

Diffusive reflection characteristics and  
Acoustic characteristics

A sound screen with a fine knitted fabric weave.  
It made compatible that uniform optical property diffusive screens and THX-authentication high-pitched acoustic



Manufactured by

**OSM CO.,LTD.**

278-3,kakehashi,Yamasaki-Cho,Shisou-Shi  
Hyogo,671-2523 Japan  
Tel.+81-790-64-5888 Fax.+81-790-62-9195

<https://www.os-worldwide.com/osm/>

株式会社オスマ